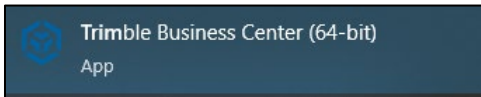


Trimble Business Center Version 2023.1

Post Installation Instructions

The following outlines the steps that need to be undertaken once Trimble Business Center is installed on your computer.

1. Open Trimble Business Center

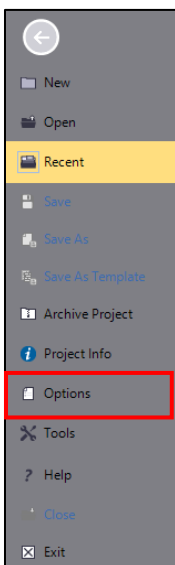


It may take a little while for the database to initialise.



2. If you are prompted for old configurations select No.

3. Select File → Options



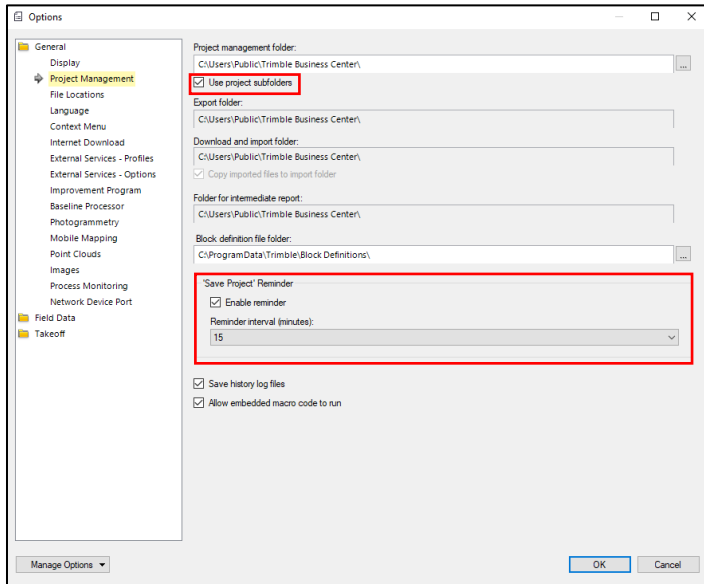
4. Select **Project Management**

- You will need to update your folders to match those shown below.

You will need to **untick** the box *Use project subfolders* to edit some of the boxes. After you finish filling out the Project management folder **re-tick** *Use project subfolders*.

Note: You will need to create these folders in the browse menu to select them if they do not already exist.

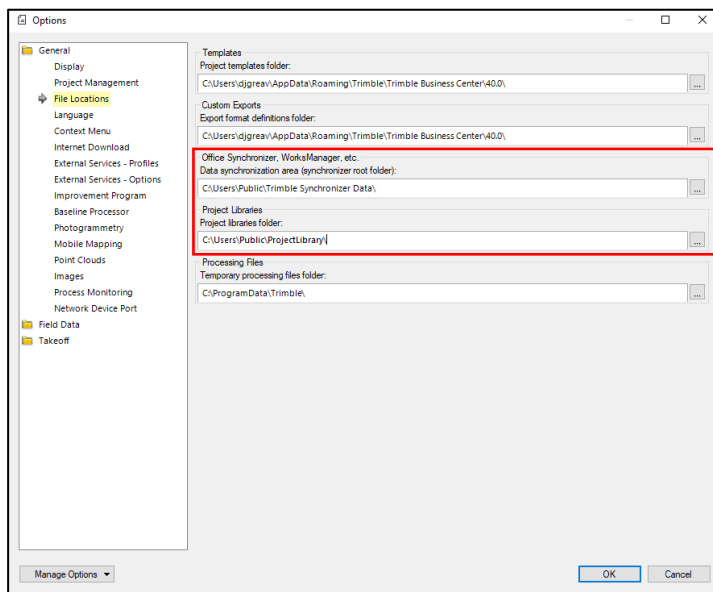
- Tick on **Enable reminder** and select a 15-minute interval



5. Select **File Locations**

- Change the Office Synchronizer folder to *C:\Users\Public\Trimble Synchronizer Data*
- Change the Project Library to *C:\Users\Public\ProjectLibrary*

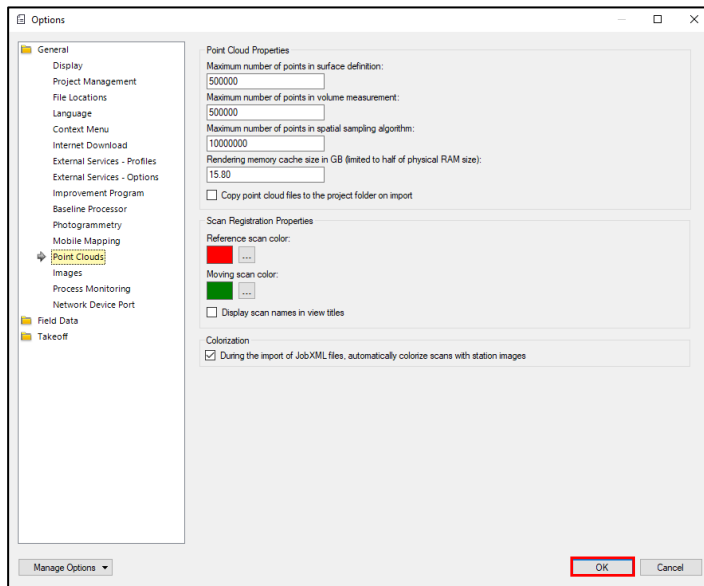
Note: You will need to create these folders in the browse menu to select them if they do not already exist.



6. Select **Point Clouds**

Change the Rendering memory cache size to the value that corresponds to half of your physical memory (RAM). In my example the RAM is 32 GB, so I entered 16GB.

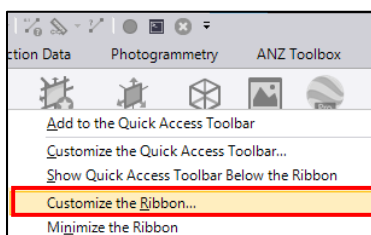
Device specifications	
Device name	TM10330300
Processor	Intel(R) Xeon(R) CPU E5-1630 v4 @ 3.70GHz 3.70 GHz
Installed RAM	32.0 GB (31.9 GB usable)
Device ID	b77ceca1-ffc2-4ab8-8fea-495e47fdc144
Product ID	00329-00000-00003-AA548
System type	64-bit operating system, x64-based processor
Pen and touch	No pen or touch input is available for this display



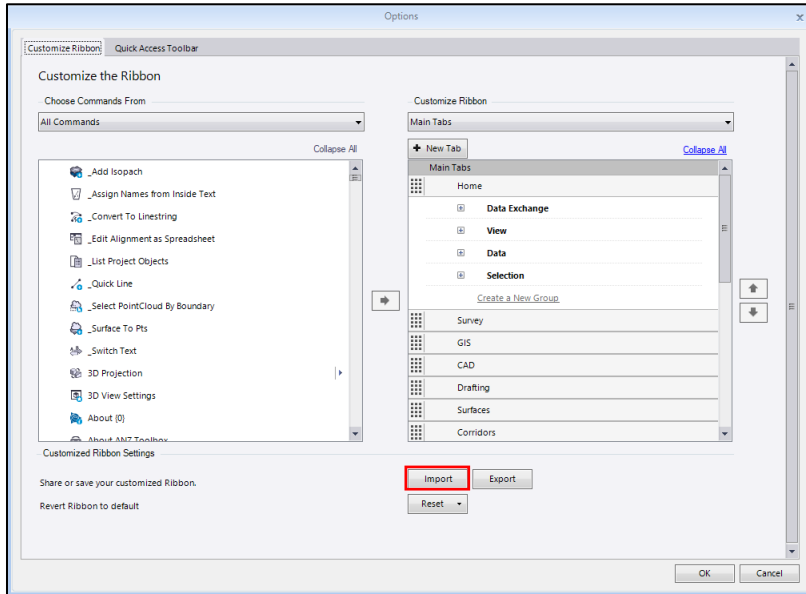
7. Press **OK**

8. **Right Click** on the ribbon at the top of the screen

9. Select **Customize the Ribbon**

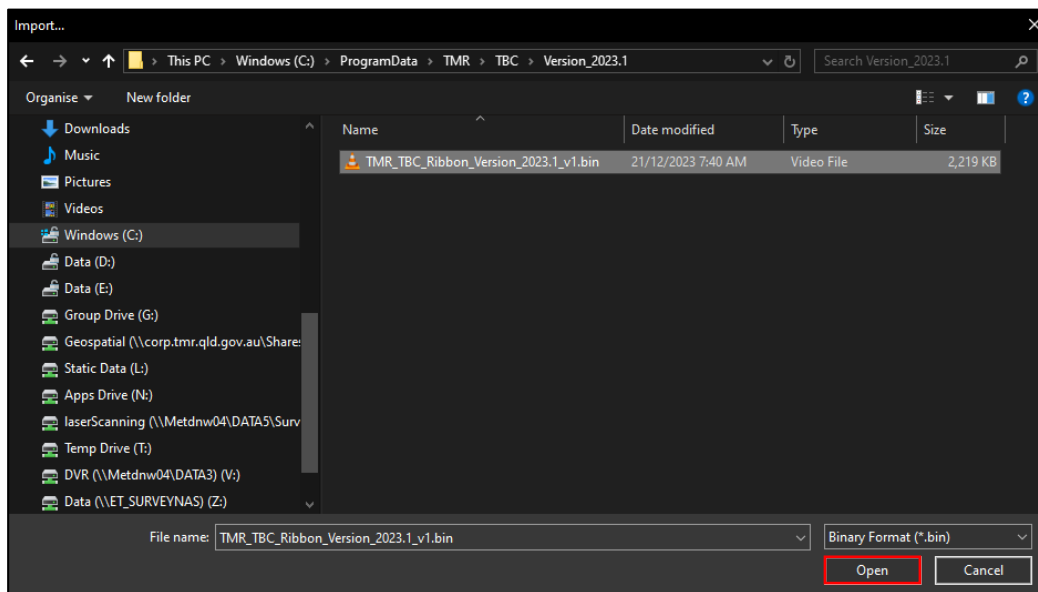


10. Press Import



11. Browse to **C:\ProgramData\TMR\TBC\Version_2023.1** and select **TMR_TBC_Ribbon_Version_2023.1_v1.bin**

12. Press **Open**



13. Press **OK**

Your ribbon should now contain the **TMR GNSS** tab and our customised **Quick Access Toolbar**.

