

# Coomera Connector (Future stages)



**Legend**

- Coomera Connector (Future stages)
- Heavy rail
- Coomera Connector (Stage 1)
- Current gazetted corridor – proposed to be amended

CORNUBIA

Mount Cotton Road

CARBROOK

ALBERTON

Interchange with Stapylton—Jacobs Well Road

Connects to Mount Cotton Road and Beenleigh—Redland Bay Road

Beenleigh—Redland Bay Road

STAPYLTON

Interchange with Fryar Road

Eagleby Road

Fryar Road

Stapylton—Jacobs Well Road

EAGLEBY

LOGANHOLME

Connects to Pacific Motorway (M1) and Logan Motorway (M6)

Exit 38

Exit 35

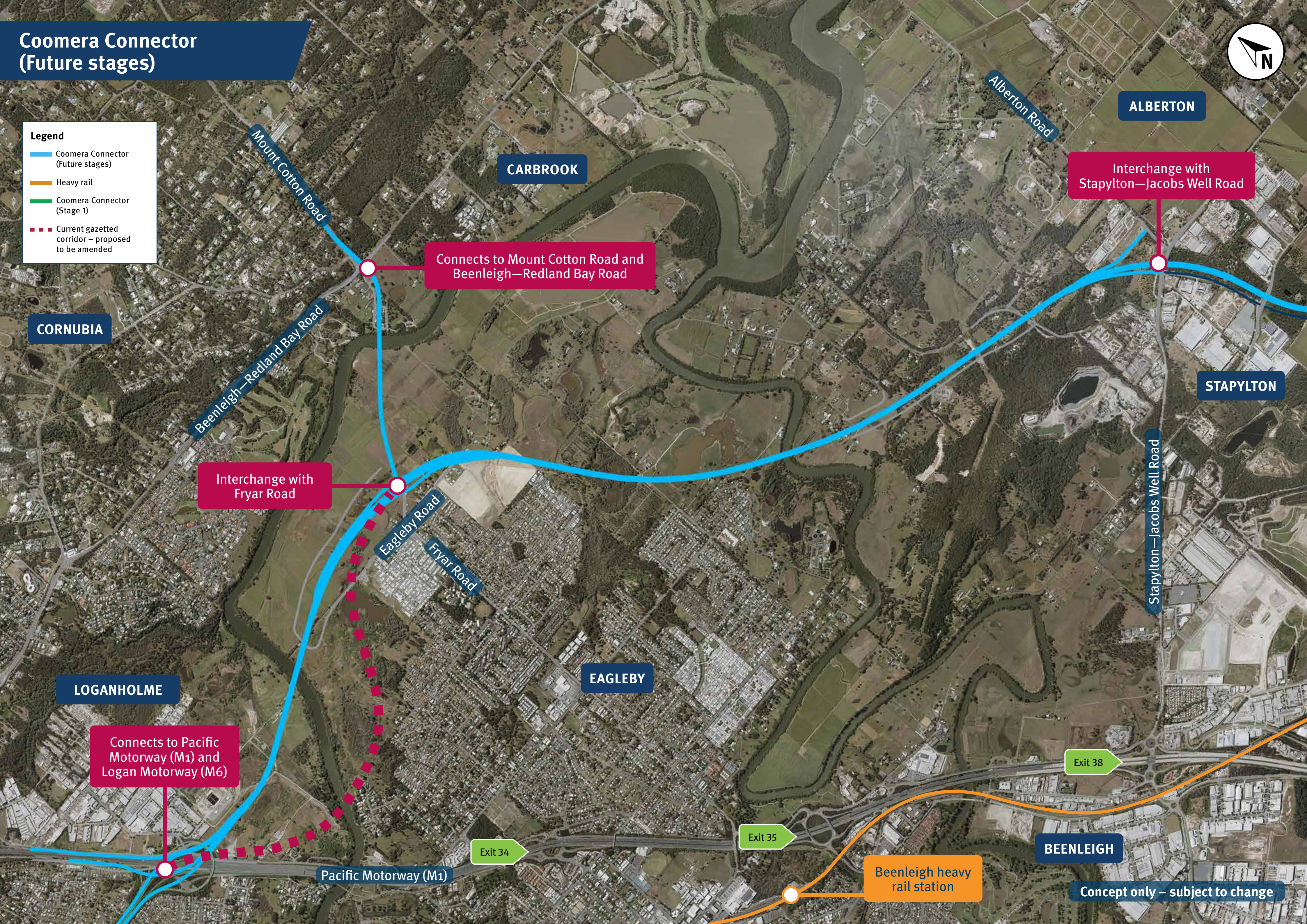
Exit 34

Pacific Motorway (M1)

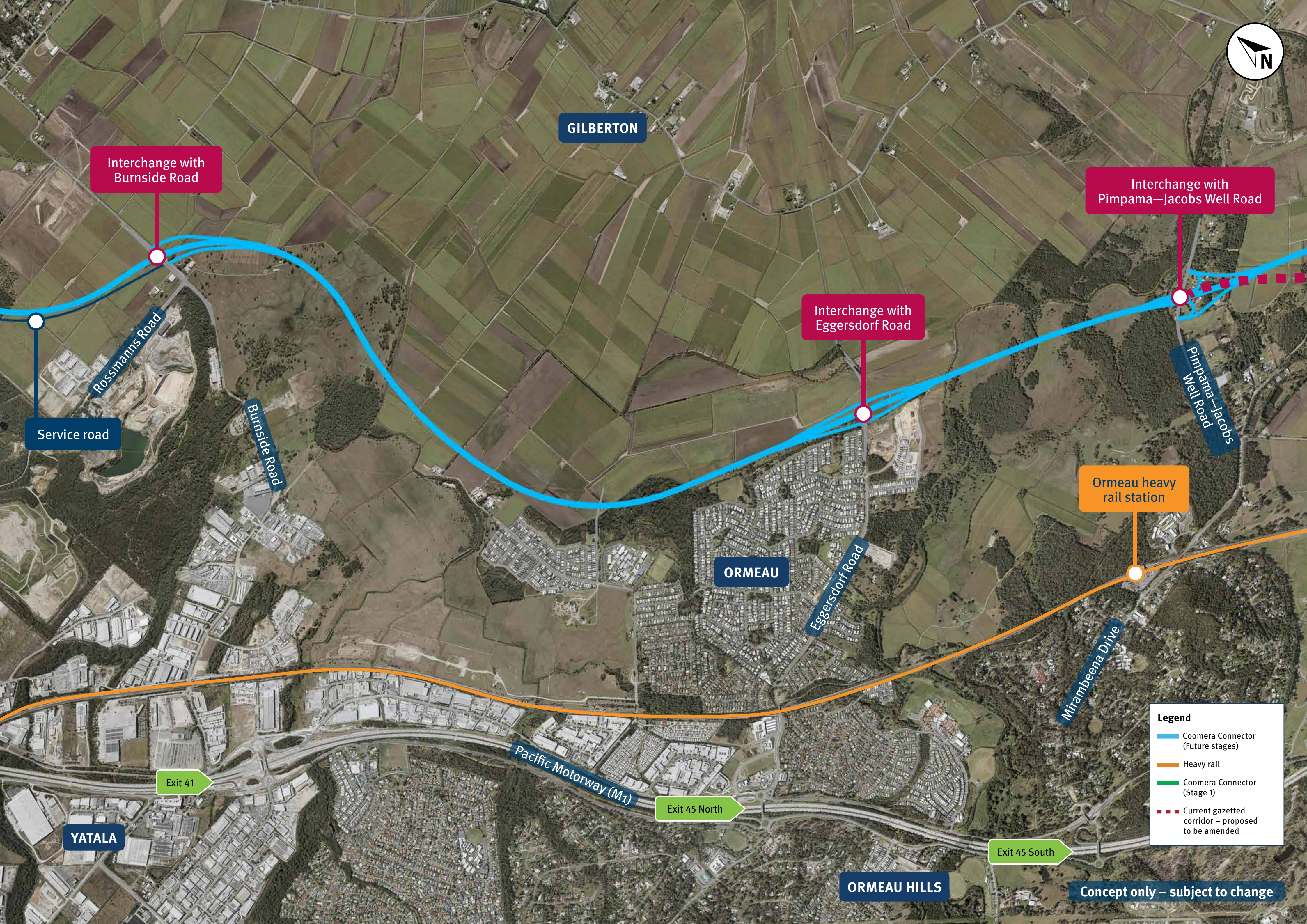
Beenleigh heavy rail station

BEENLEIGH

Concept only – subject to change







GILBERTON

ORMEAU

ORMEAU HILLS

Interchange with Burnside Road

Interchange with Eggersdorf Road

Interchange with Pimpama—Jacobs Well Road

Service road

Ormeau heavy rail station

Exit 41

Exit 45 North

Exit 45 South

YATALA

**Legend**

- Coomera Connector (Future stages)
- Heavy rail
- Coomera Connector (Stage 1)
- - - Current gazetted corridor – proposed to be amended

Concept only – subject to change





NORWELL

Interchange with Foxwell Road moved from Oaky Creek Road

Interchange with Yawalpah Road

Amity Road

Foxwell Road

Oaky Creek Road

PIMPAMA

COOMERA

Shipper Drive

Connects to Coomera Connector Stage 1 at Shipper Drive

Future Pimpama heavy rail station

Yawalpah Road

Coomera heavy rail station

Westfield Coomera

Pacific Motorway (M1)

Dreamworld

Exit 49

Exit 54

UPPER COOMERA

**Legend**

- Coomera Connector (Future stages)
- Heavy rail
- Coomera Connector (Stage 1)
- - - Current gazetted corridor – proposed to be amended

Concept only – subject to change