

Coomera Connector Stage 1

(Second M1)

March 2023

Shipper Drive

Until future stages of the Coomera Connector are built, Shipper Drive will be the end point of Stage 1 and the main direct access route in the north to the Coomera Connector.

Recognising the importance of this connection for the Coomera Connector, TMR has formally declared a section of Foxwell Road (between the M1 and Shipper Drive) and a section of Shipper Drive (between Foxwell Road and Waterway Drive) as a state-controlled and limited access road. This gazetted route is now known as the Coomera Link Road and will allow TMR to better manage the operation and safety of these road sections that are critical to the Coomera Connector.

Shipper Drive and Foxwell Road (Coomera Link Road)

As part of Stage 1, a concept plan is currently being developed to cater for increased traffic volumes accessing the Coomera Connector.

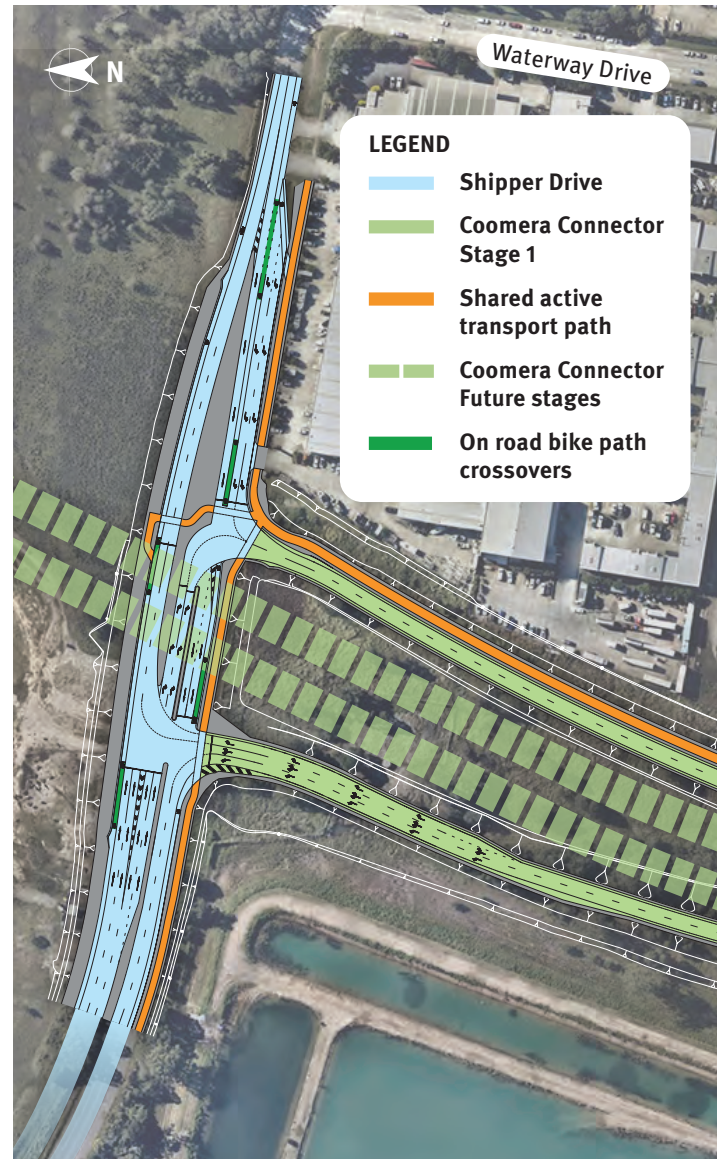
While the plan overleaf is subject to change as design progresses, it is expected the following works will be required:

- realign and widen Shipper Drive to four lanes between Foxwell Road and Waterway Drive to cater for increased traffic volumes
- convert the existing roundabout at Foxwell Road and Shipper Drive to a fully signalised intersection with extended turn lanes, including pedestrian signals to improve active transport safety
- construct a signalised intersection on Shipper Drive (between Oaky Creek and Foxwell Road) to provide safe access to major residential developments on the western side of Shipper Drive
- include a dedicated pedestrian and bike path on Shipper Drive that will provide direct access to the 16 kilometre active transport path to be constructed as part of the Coomera Connector Stage 1.

Foxwell Road in Coomera

Recognising the rapidly growing area of Coomera, particularly around Foxwell Road, the City of Gold Coast has plans to upgrade key intersections on Foxwell Road. For example, a project to install traffic signals at the Amity Road intersection includes constructing a dedicated left-hand turn lane from Amity Road into Foxwell Road and shared paths to assist pedestrians and bike riders, particularly those travelling to and from school.

For more information on these works contact Council via email at mail@goldcoast.qld.gov.au or by calling 1300 465 326.



Shipper Drive at-grade connection to the Coomera Connector.

Shipper Drive connection to the Coomera Connector

The Shipper Drive interchange, as part of Stage 1 North works, will include:

- a signalised intersection for safe access to and from the Coomera Connector
- a northbound off-ramp from the Coomera Connector to Shipper Drive
- a southbound on-ramp from Shipper Drive to the Coomera Connector.





Need more information?

Residents and motorists are encouraged to subscribe to the free SMS and email traffic alert service to keep up-to-date on the Coomera Connector Stage 1 project.

To register, contact the project team on the details below:

Phone: 1800 568 978 (free call from any landline during business hours, 9am – 5pm, Mon to Fri)

Email: coomeraconnector@tmr.qld.gov.au

Web: www.tmr.qld.gov.au/coomeraconnector

Mail: Department of Transport and Main Roads – PO Box 442, Nerang QLD 4211

Interpreter and accessibility services

Interpreter service: 13 14 50

TTY/voice calls: 13 36 77 (ask for 13 23 80)

Speak & Listen: 1300 555 727 (ask for 13 23 80)

SMS relay: 0423 677 767 (ask for 13 23 80)

Email: helpdesk@relayservice.com.au (ask for 13 23 80)

Scan the QR Code to go directly to the Coomera Connector web page.



13 QGOV (13 74 68)

www.tmr.qld.gov.au | www.qld.gov.au