

Maryborough - Hervey Bay Road / Pialba - Burrum Heads Road intersection upgrade

Connect shared path to existing

Upgrade intersection
Refer Insert 1

Access to petrol station services

Maryborough - Hervey Bay Road duplicated

U-turn facility at intersection for motorists intending to travel west on Pialba-Burrum Heads Road

Pialba-Burrum Heads Road duplicated

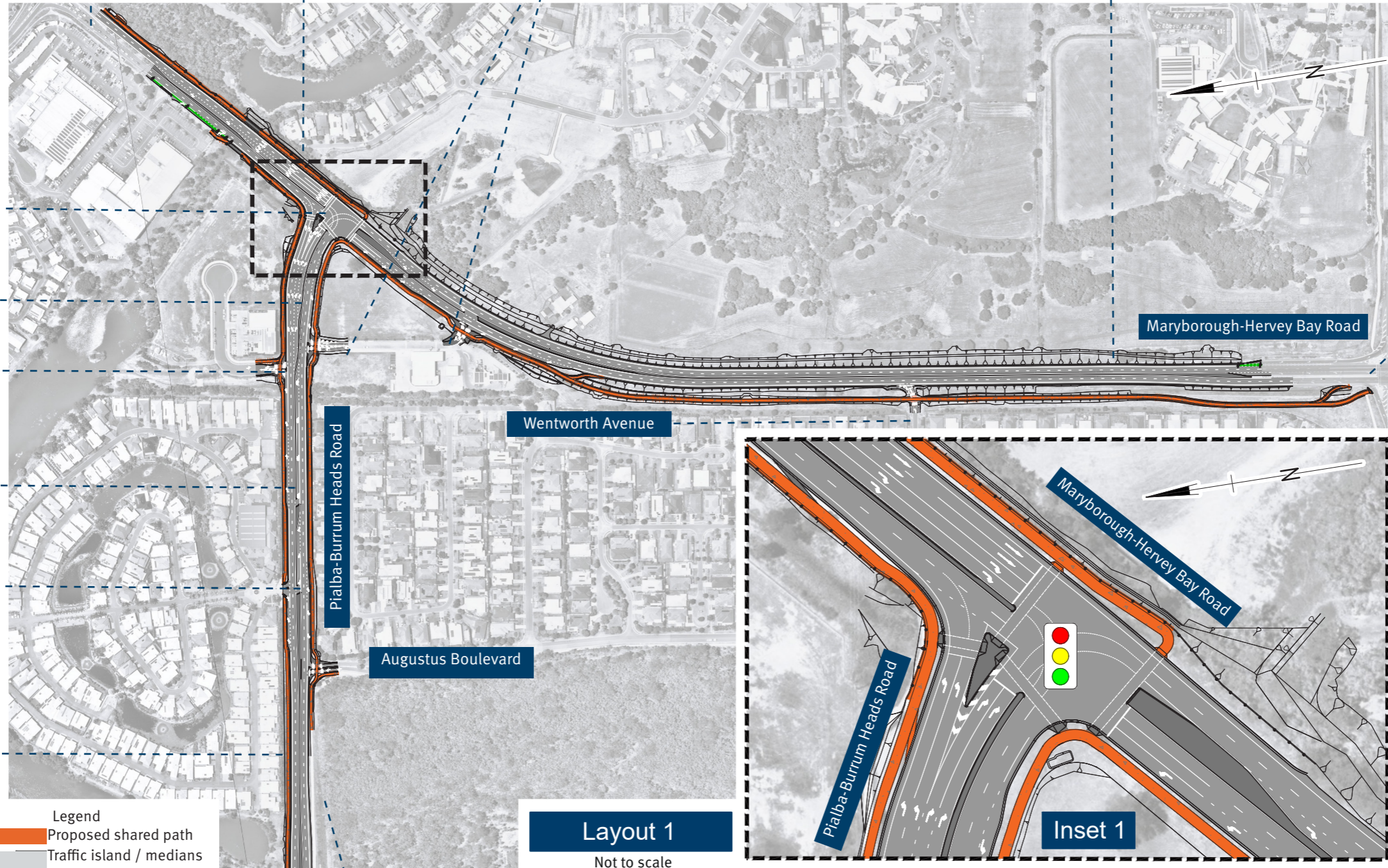
Access to Guest Court services

U-turn facility on Pialba-Burrum Heads Road provides access to Guest Court

Left in/left out and right in access to Palm Lake Resort

Pedestrian and bike path on northern side of Pialba-Burrum Heads Road

Pedestrian and bike path on western side of Maryborough-Hervey Bay Road



Layout 1
Not to scale

- Intersection features:**
- signalled pedestrian and bike crossings
 - two turn lanes to accommodate major traffic movement crossings

Legend
█ Proposed shared path
█ Traffic island / medians

Connect shared path to existing

