

Artist impression of the park 'n' ride and bus interchange at Rochedale

Keeping informed

For further information on the project, visit the Department of Transport and Main Roads website: www.tmr.qld.gov.au

Phone: 1800 549 664*

Email: eightmileplains@tmr.qld.gov.au

Post: PO Box 442, Nerang, QLD, 4211

* Free call from anywhere in Australia, call charges apply for mobile phones and payphones. Check with your service provider for call costs.

Busway extension — Eight Mile Plains to Springwood

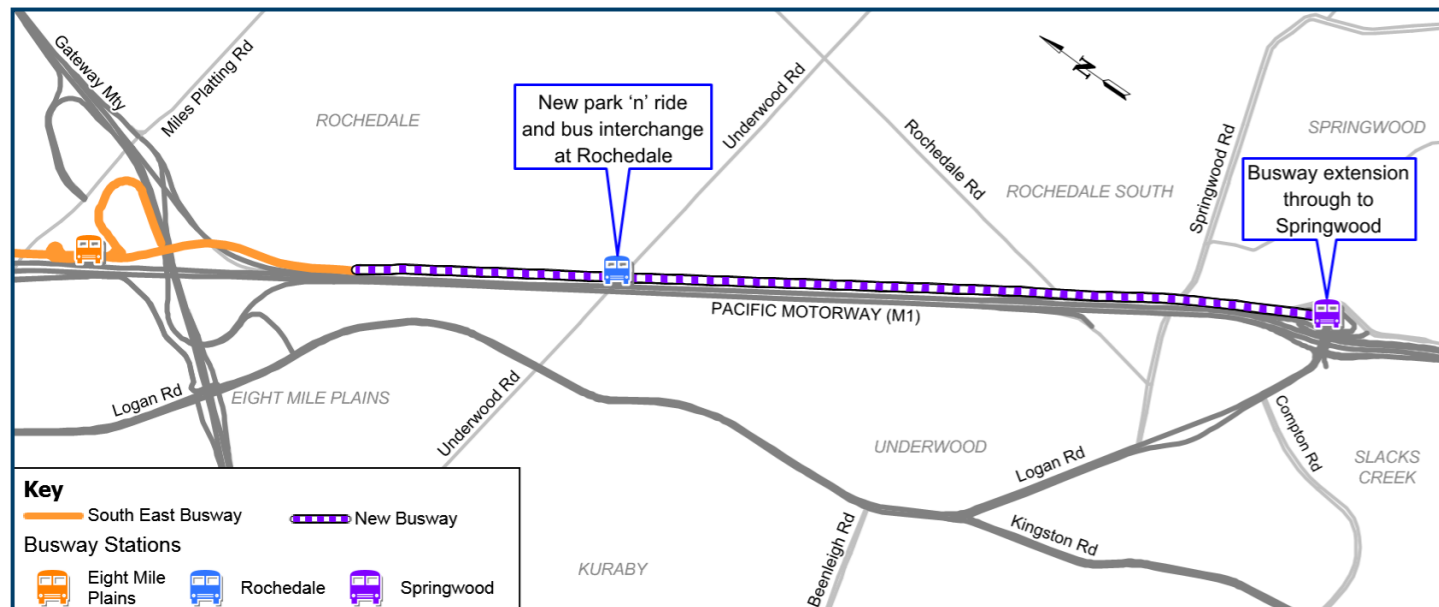
The Pacific Motorway (M1) – Eight Mile Plains to Daisy Hill upgrade project includes an extension to the busway from Eight Mile Plains to Springwood.

The busway extension will include:

- construction of an additional 3.8 kilometres of dedicated busway to complete the 6.6 kilometre connection between Eight Mile Plains and Springwood bus station
- a new park 'n' ride and bus interchange at Rochedale
- a passenger pick up and drop off area at the new park 'n' ride
- links to allow easy interchange between local buses and busway services.

Extending the busway will:

- give more southside residents a congestion free run on fast, frequent and reliable bus services
- encourage more people to use public transport
- provide improved connections to where people live, work and play
- improve access to major destinations including the Brisbane Central Business District, Springwood, and the University of Queensland (via the Eastern Busway)
- help reduce overall vehicle emissions by reducing car use. For every full bus, there are up to 40 fewer cars on the road
- allow for 1.7 million additional passengers to use the busway each year by 2026.



Key

- South East Busway
- New Busway

Busway Stations

- Eight Mile Plains
- Rochedale
- Springwood

Pacific Motorway (M1) – Eight Mile Plains to Daisy Hill Upgrade

Stage 2 of the M1 Upgrade program

The Queensland Government is building a better M1 with Stage 2 of the Pacific Motorway (M1) upgrade program between Eight Mile Plains to Daisy Hill now in the design phase of the project.

This project is part of a rolling program of M1 upgrades between the Gateway and Logan Motorways being delivered in strategic priority stages:

- Stage 1 of the M1 upgrade program is the M1/M3 Gateway Merge upgrade which is currently in construction.
- Stage 2 of the M1 upgrade program between Eight Mile Plains to Daisy Hill upgrade is currently under detailed development.
- Stage 3 of the upgrade program is Daisy Hill to Logan Motorway and is currently in early planning phase.

The Stage 2 project will focus on improvements to over eight kilometres on the M1 between the Gateway Motorway and Loganlea Road including:

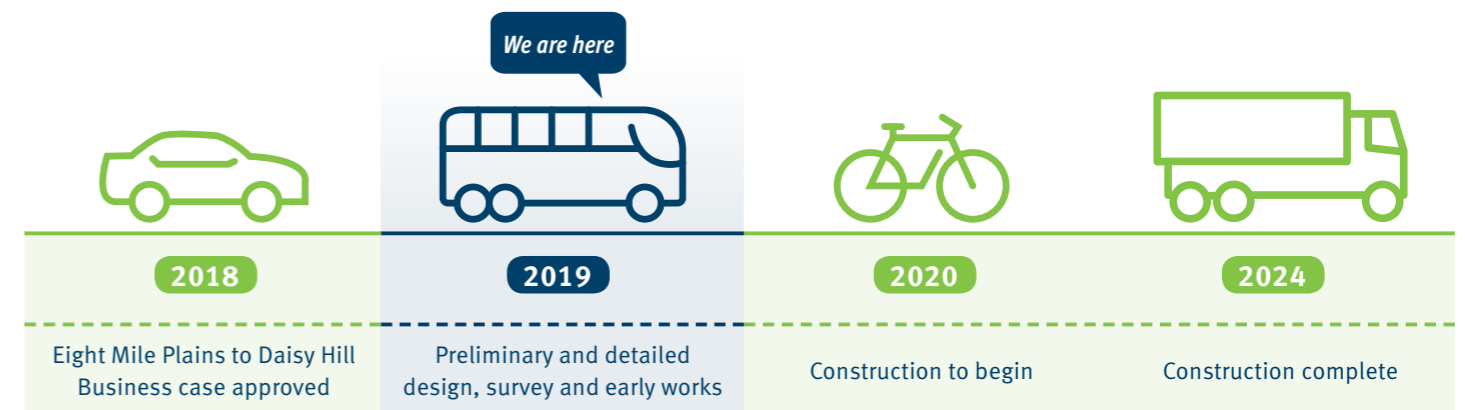
- Gateway Motorway to Loganlea Road: widening up to five northbound lanes.
- Rochedale Road to Logan Road: widening to four southbound lanes.
- South East Busway Extension from Eight Mile Plains to Springwood including a new bus station and park 'n' ride at Rochedale.
- Completion of the missing V1 cycleway link on the western side of the M1 from the Gateway Motorway to Paradise Road.

Benefits of the project

This project will provide many benefits to the travelling community:

- \$28.3 million in travel time reliability benefits. Helping to get you to your destination on time.
- Reducing congestion and supporting faster peak hour travel in this area.
- Ensuring local travel networks are upgraded to efficiently take traffic away from the motorway.
- Increasing travel time reliability for freight and inter-regional transport.
- A greatly expanded walking and cycling network, giving you more choice for active travel.
- Supplying a more reliable bus service with the extension of the busway and new facilities.

Key milestones



Australian Government

BUILDING OUR FUTURE



Queensland Government

Eight Mile Plains to Daisy Hill Upgrade



Fish Passage Bulimba Creek Tributary Brook

The project team is working with the Department of Agriculture and Fisheries to improve fish passage between School Road and Levington Road along the M1 at Eight Mile Plains, known locally as Big Al's brook.

Sports Drive on-ramp closure

Replacing the use of Sports Drive as an M1 on-ramp with Lexington Road will allow Sports Drive to return to a residential street. This will reduce traffic around important local meeting places such as the Library, surrounding sports grounds and medical facilities, returning the neighbourhood to a local access precinct.

Smart Motorways

Smart Motorways will be installed across the Eight Mile Plains to Daisy Hill project. Smart Motorways are intelligent information, communication and control systems incorporated in, and alongside the road corridor.



New M1 on-ramp at Lexington Road

As part of this project the project team will be upgrading the intersection of Compton Road, Logan Road and Lexington Road at Slacks Creek. Replacing the Sports Drive access, Lexington Road will become a new on-ramp to the Pacific Motorway allowing safer access to the M1.

Combining M1 on-ramps

The project will combine and increase the length of on-ramps at both Paradise Road and Loganlea Road. By upgrading these on-ramps congestion will be eased and a safer entry to the M1 will be achieved.

Veloway

As part of the Eight Mile Plains to Daisy Hill Project, TMR will be constructing up to 7.5 kilometres of dedicated cycleway infrastructure to infill the missing V1 Veloway link between the Gateway Motorway and existing cycleway north of Loganlea Road.